

RACIAL EQUITY REPORT CARD

PRODUCED BY YOUTH JUSTICE PROJECT

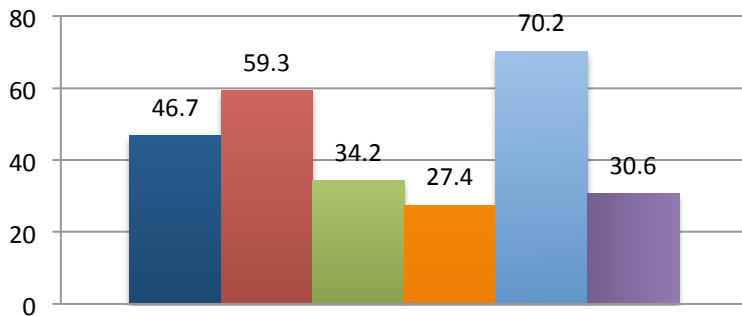
NORTH CAROLINA



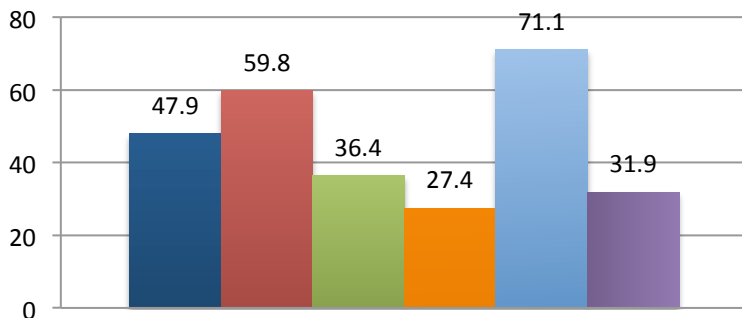
ACADEMIC ACHIEVEMENT

% of Students Grade 3-8 "College and Career Ready" on End-of-Grade Exams (2014-2015)

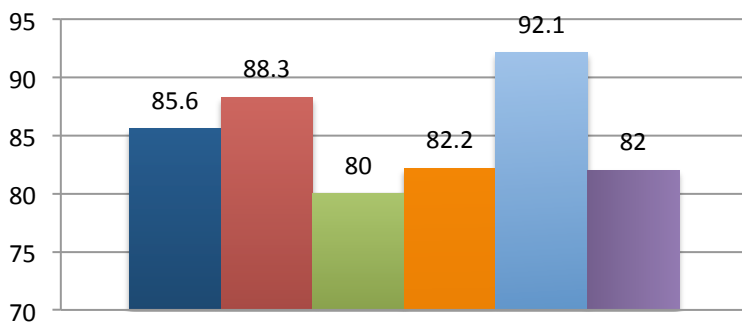
■ Overall ■ White ■ Hispanic ■ Black ■ Asian ■ American Indian



% of High School Students "College and Career Ready" on End-of-Course Exams (2014-2015)

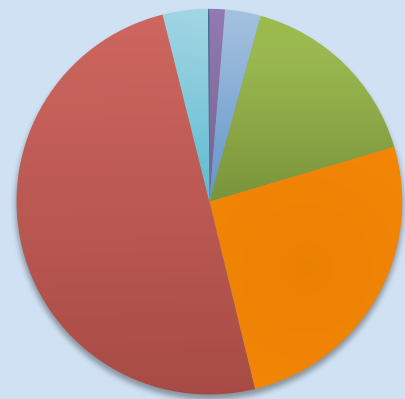


% of Students Who Graduate High School Within 4 Years of Entering (2014-2015)



School Population Demographics

2015-2016



- American Indian (1.3%)
- Asian (3%)
- Hispanic (16.1%)
- Black (25.8%)
- White (49.9%)
- Multiracial (3.8%)
- Pacific Islander (.1%)

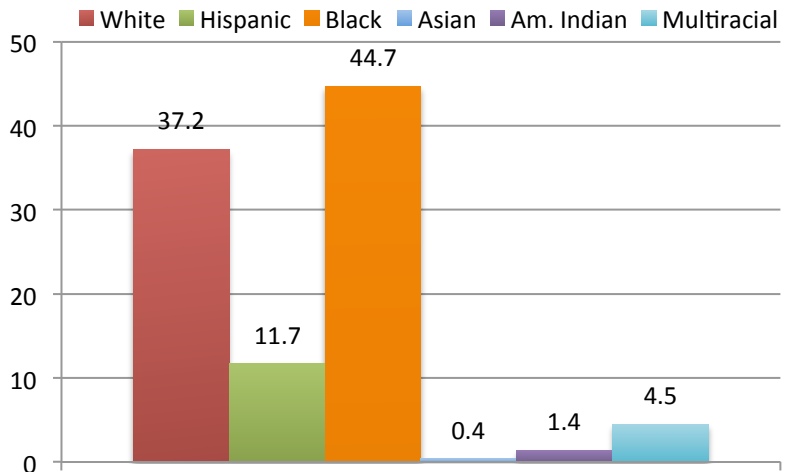
Total Population:
1,502,362

SCHOOL DISCIPLINE

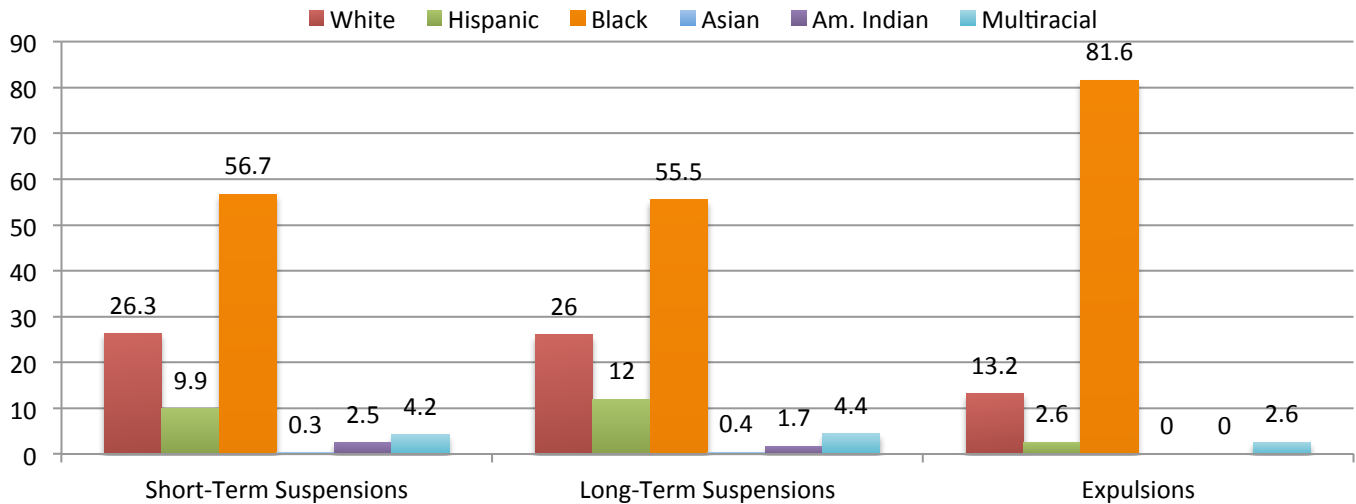
2014-2015 DISCIPLINE OVERVIEW

In-School Suspensions	207,943
Short-Term Suspensions (STS) (1-10 school days)	208,650
High School STS Rate (Per 100 Students)	19.53
Alternative Learning Program Placements	13,448
Long-Term Suspensions (more than 10 days)	1,085
Expulsions (indefinite)	42

% of In-School Suspensions (2014-2015)



% of Suspensions and Expulsions (2014-2015)

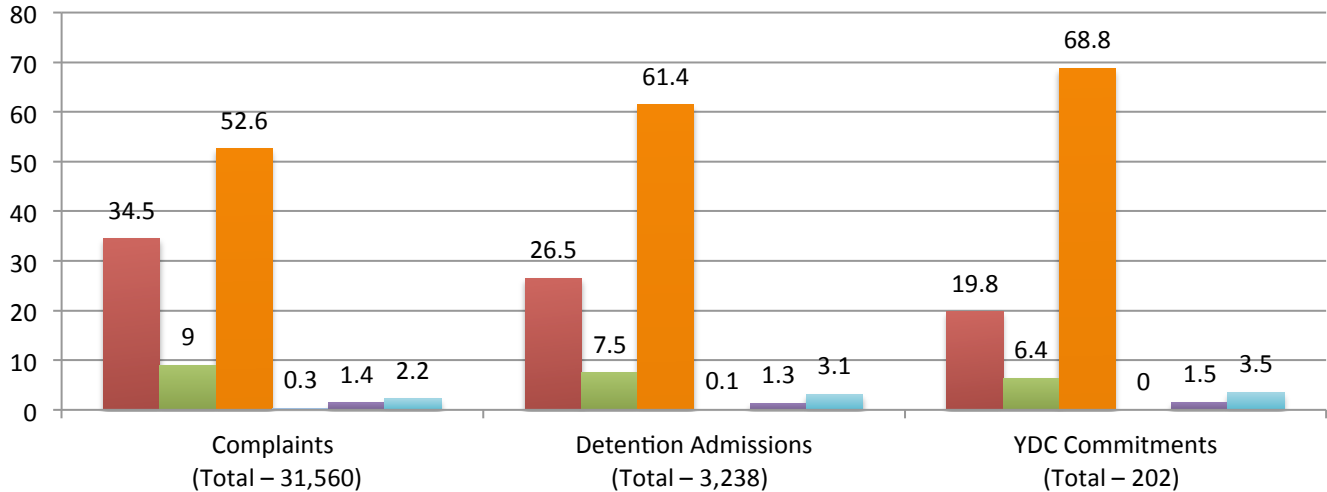


	Short-Term Suspension Rate (Per 10 students)	Long-Term Suspension Rate (Per 100,000 students)
Black	3	153
American Indian	2.5	88
Multiracial	1.6	87
Hispanic	.8	56
White	.7	37
Asian	.2	9

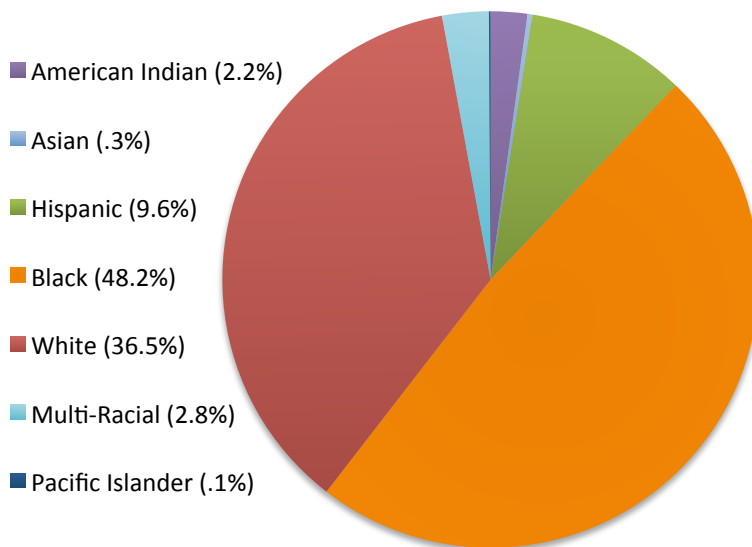
COURT INVOLVEMENT

% of Juvenile Complaints, Detention Admissions, and Youth Development Center (YDC) Commitments (CY 2014)*

White Hispanic Black Asian Am. Indian Multiracial



School Based Juvenile Complaints by Race* (July 1, 2015 – June 30, 2016)



*This only includes juveniles who are under 16 years old. Data on arrests and detention for youth who are 16 and older is not available since North Carolina automatically sends these youth to the adult court system.

ABOUT THE REPORT CARDS

The **Racial Equity Report Cards** use publically available data to provide a snapshot of the racial disparities that exist in a community's public education and juvenile justice systems.

While not exhaustive, the information in the Report Cards is intended to help communities identify racial disparities in their youth-serving institutions so they can begin to determine the causes and develop solutions that address racial inequity.

Want to see how your community compares?

To compare your community with other districts and counties, view data sources, and access racial equity resources, visit youthjusticenc.org/learn/racial-equity-report-cards/.

Youth Justice Project of the Southern Coalition for Social Justice works to ensure equity, fairness, and justice for youth in high-quality education, juvenile, and criminal systems.

For more information, visit us at youthjusticenc.org.